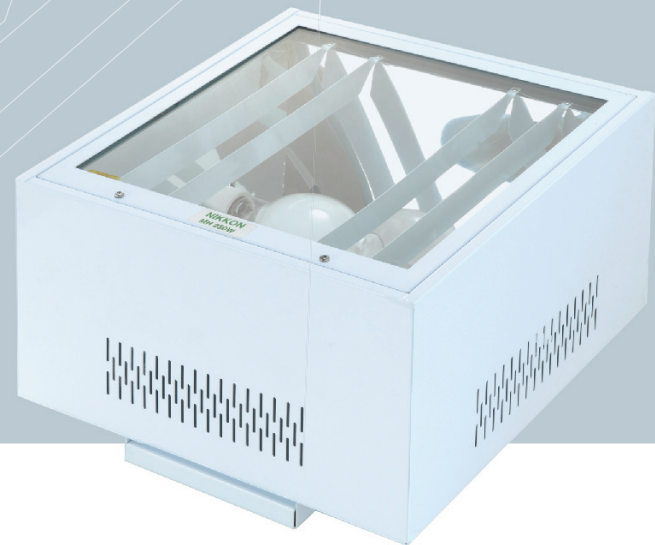


NL series lowbay



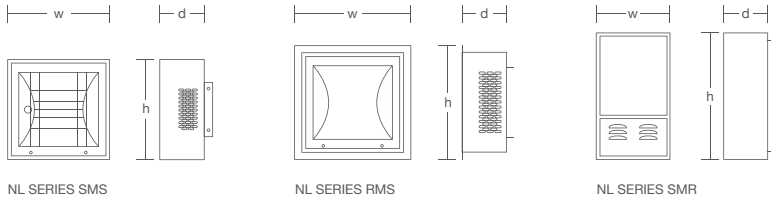
matching table

model	lamp type											
	metal halide				high pressure sodium				mercury vapor			
	70W	150W	250W	400W	70W	150W	250W	400W	80W	125W	250W	400W
NL 150-RMS	•	•			•	•			•	•		
NL 400-RMS			•	•			•	•			•	•
NL 150-SMS	•	•			•	•			•	•		
NL 400-SMS			•	•			•	•			•	•
NL 150-SMR	•	•			•	•			•	•		
NL 400-SMR			•	•			•	•			•	•

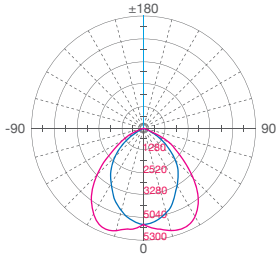
RMS : recessed mount square • SMS : surface mount square • SMR : surface mount rectangular
 note : specification is subject to change without prior notice

dimension

model	width	depth	height
NL 150-RMS	400 mm	150 mm	400 mm
NL 400-RMS	500 mm	230 mm	500 mm
NL 150-SMS	345 mm	150 mm	345 mm
NL 400-SMS	420 mm	230 mm	420 mm
NL 150-SMR	250 mm	150 mm	430 mm
NL 400-SMR	320 mm	195 mm	600 mm



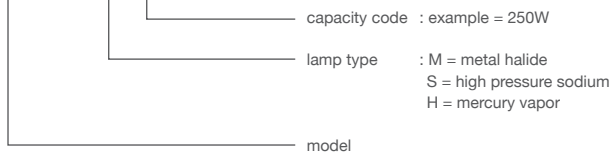
photometric curve



note : photometric result tested based on 19000lm MH 250W coated bulb

key for standard order coding

NL400 RMS - M 0250



technical data

voltage • 220 - 240 Vac 50 Hz
 lamp wattage • 70W - 400W
 holder type • E40 ceramic lamp holder
 colour of housing • white



features

electrical system

- built-in control gear suitable for HID lamp from 70W - 400W with well ventilated control gear compartment

reflector

- high purity aluminium reflector with hammered / clear polished surface

others

- ceramic lamp holder and thermal resistant fibre glass wire