

S7002



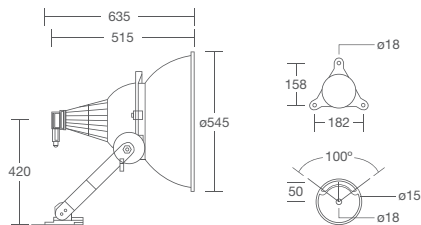
order code

model	lamp type	lamp holder	order code
S7002 MH 1000W	tubular	E40	S7002-M1000
S7002 HPS 1000W	tubular	E40	S7002-S1000
accessories	housing material	IP rated	order code
remote control gear (MH 1000W)	steel c/w epoxy powder	IP43	S5100 UC-M1000
remote control gear (HPS 1000W)	steel c/w epoxy powder	IP43	S5100 UC-S1000
remote control gear (MH 1000W)	die-cast aluminium	IP65	S5100 UA-M1000
remote control gear (HPS 1000W)	die-cast aluminium	IP65	S5100 UA-S1000

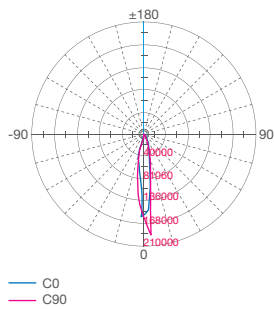
note : specification is subject to change without prior notice



dimension

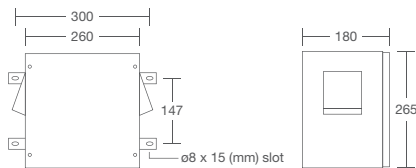


photometric curve

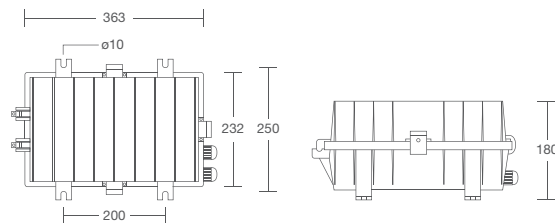


accessories

S5100-UC

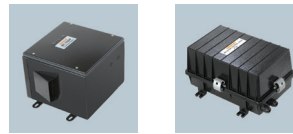


S5100-UA



technical data

ingress protection • IP65 (lamp fitting)
 voltage • 220 - 240 Vac 50 Hz
 lamp wattage • MH 1000W & HPS 1000W
 holder type • E40 ceramic lamp holder
 maximum weight • 11 kg
 control gear weight • S5100-UC : 12.5 kg / S5100-UA : 11.5 kg
 colour of housing • grey



features

housing

- high pressure aluminium die-cast lamp holder housing

reflector

- high purity anodized polished aluminium deep draw reflector

glass

- fixed thermal resistant tempered glass

mounting bracket

- steel mounting bracket coated with epoxy powder attached with rotatable mounting bracket

rear cover

- easy access to the lamp from the rear of the fitting